

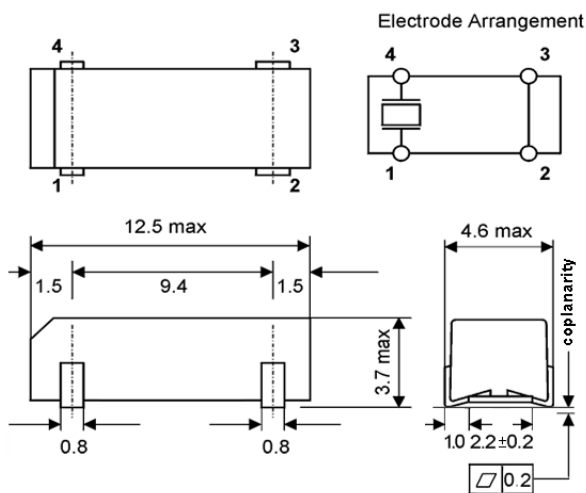


## Quartz Crystal

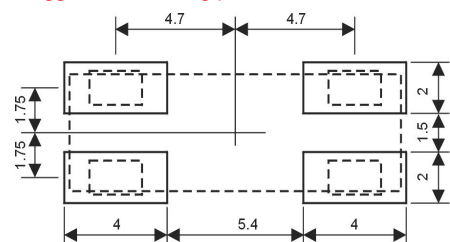
SMD-version

part no.	12.87264
model	KX - C
frequency	20.0 MHz
mode	fundamental
operating temperature	-20° ~ +70°C
frequency tolerance at +25°C	±50 ppm
temperature tolerance at -20° ~ +70°C	±50 ppm
load capacitance $C_L$	16 pF
series resistance $R_1$ max.	50 Ohm
aging at 25°C ( first year ) max.	±5 ppm
shunt capacitance $C_0$ max.	7.0 pF
drive level max.	0.1 mW
contents of reel	1000 pcs.

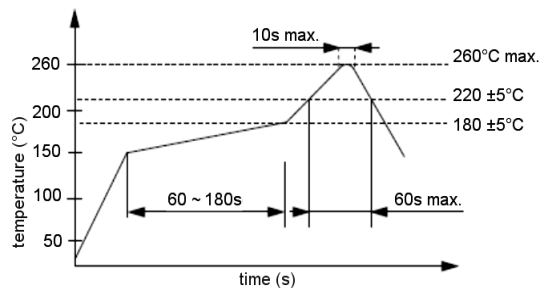
Dimensions (mm):



Suggested soldering pad:



Reflow soldering condition:



Tape specification:

