

Clock Oscillator

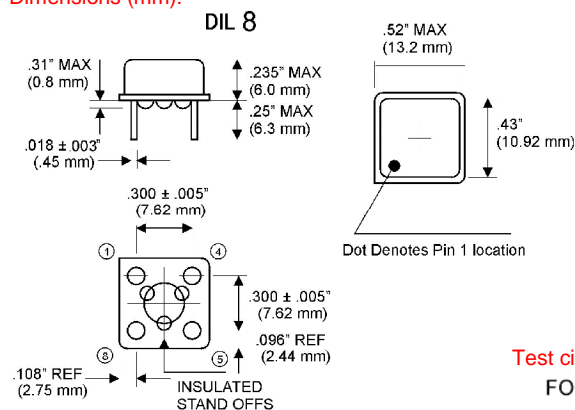
+5.0V

TTL / HCMOS

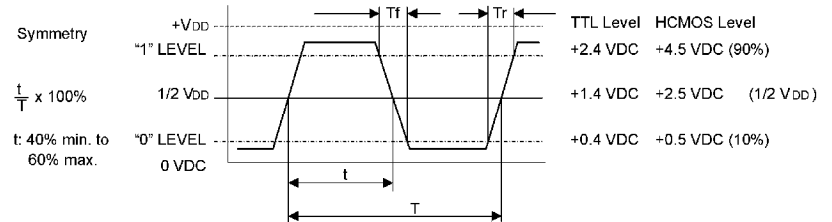
| | |
|-----------------------------|--|
| part no. | 12.xxxxx |
| model | KXO-210 |
| package | DIL 8 |
| frequency range | 0.5 ~ 100 MHz* |
| frequency stability | standard ± 100 ppm available ± 25 ppm ~ ± 100 ppm |
| operating temperature range | standard $-20^{\circ}\text{C} \sim +70^{\circ}\text{C}$ available $-40^{\circ}\text{C} \sim +85^{\circ}\text{C}$ (=KXO-215) |
| storage temperature range | $-55^{\circ}\text{C} \sim +125^{\circ}\text{C}$ |
| input voltage | +5.0V DC $\pm 10\%$ |
| input current max. | 20mA 0.5 ~ 20MHz 40mA 20.1 ~ 70MHz 60mA 70.1 ~ 100MHz |
| symmetry | standard 60/40% at $\frac{1}{2} V_{DD}$ available 55/45% at $\frac{1}{2} V_{DD}$ |
| rise and fall time max. | 10 ns 0.5 ~ 25 MHz 6 ns 25.1 ~ 70 MHz 4 ns 70.1 ~ 100 MHz |
| "0" level max. | +0.5V (10% V_{DD}) |
| "1" level min. | +4.5V (90% V_{DD}) |
| output load | 1 – 8 TTL or CL = 50 pF typ. |
| logic family | TTL or HCMOS compatible |
| packing unit | 40 pcs. |

* > 100 MHz on request

Dimensions (mm):

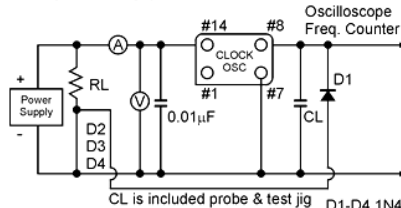


Waveform:

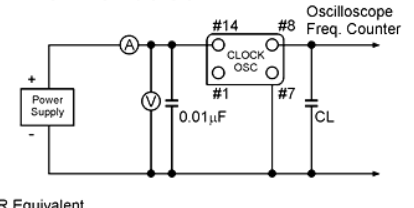


Test circuit:

FOR TTL COMPATIBLE



FOR HCMOS COMPATIBLE



CL is included probe & test jig
D1-D4 1N4148 OR Equivalent
CL 15pF
RL 400Ω

| PIN | CONNECTION |
|----------|------------|
| #1 (#1) | N/C |
| #7 (#4) | GND |
| #8 (#5) | OUTPUT |
| #14 (#8) | V_{DD} |